



THE 75TH WORLD SCIENCE FICTION CONVENTION

WORLDCON 75

9–13 AUGUST, 2017 ♦ MESSUKESKUS, HELSINKI, FINLAND

PROGRESS REPORT #5

Suomi
Finland
100



WORLDCON 75

PROGRESS REPORT #5

EDITOR: Nina Törnudd

CONTRIBUTORS: Saija Aro, Ari Baronofsky, Clare Boothby, Pam Burr, Colette Fozard, Jukka Halme, Marco "Mac" Johansson, Charlotte Laihonen, Karo Leikomaa, Marianna Leikomaa, Sanna Lopperi, Sonja Mikkonen, Otto Mäkelä, Terry Neill, Antti Rasinen, Edmund Schluessel, Kate Secor, Vesa Sisättö, J. Robert Tupasela, Kaisa Vitikainen, Tero Ykspetäjä

PROOFREADING: Garth Coogan,
Edmund Schluessel

GRAPHIC DESIGN: M. Pietikäinen

ILLUSTRATIONS:

Maya Hahto: cover
Minna Salminen: 5

"World Science Fiction Society", "WSFS",
"World Science Fiction Convention",
"Worldcon", "NASFiC", "Hugo Award",
and the distinctive design of the Hugo
Award Rocket are service marks of the
World Science Fiction Society, an
unincorporated literary society.

CONTENTS

AURINKOISTA KESÄÄ!	3
HOW TO MAKE THE MOST OF YOUR FIRST WORLDCON	5
REGISTRATION	7
WHAT IS TURVA?	9
TECH HELP NEEDED?	11
WORLDCON 75'S EXHIBITS HALLS – WHERE THE BOOKS LIVE	13
VOLUNTEERS – WORLDCON 75 WANTS YOU!	14
WE MADE YOU A RESTAURANT GUIDE! ENJOY!	17
MERCHANDISE	17
HELSINKI'S PUBLIC TRANSPORTATION SYSTEM: EFFICIENT AND CONVENIENT	19
RENT A FRIENDLY YELLOW CITY BIKE!	24
ARRIVING EARLY IN HELSINKI?	27
RELIGIOUS SERVICES AROUND THE WORLDCON WEEKEND	29
IF YOU HAVE SOME TIME OFF AND IT'S A SUNNY DAY	30
TOURIST INFORMATION	31
PUB MEETINGS IN FINLAND	32
GOOD TO KNOW AND NICE TO KNOW	33
PROGRESS REPORT RECAP	35

*“The world is full of great and wonderful things
for those who are ready for them.”*

MOOMINPAPPA, IN MOOMINPAPPA AT SEA
(ORIG. PAPPAN OCH HAVET) BY TOVE JANSSON



AURINKOISTA KESÄÄ!

This fifth, and final, Progress Report will be published as June turns to July. The days are long and the nights are virtually non-existent at this time in Finland, and black-out curtains are definitely your friend! After Midsummer, the days will slowly start getting shorter again, but that does not mean Worldcon 75 works any less.

As we move into the summer, we are getting a lot of the final practical things confirmed. Worldcon 75 staff had its final Staff Weekend in May. We toured the venue several times, and many plans started coming into life, including the final locations of everything at the convention. Our Programme team is working hard to get everything together, and those of you on Programme should have heard from them already. The plans for the Hugo Awards, Masquerade and other events are also being finalised and there are trips and tours being confirmed. We are talking to so many cool people locally, it's hard to contain our excitement at this point!

If you are still wondering if you could help with the organisation of the convention, the answer is yes! We are

going to need a lot of volunteers during the convention, and although the bigger staff positions have already been filled, there are smaller staff positions which still require more staff. Please contact us if you'd like to help! You can also walk up to the volunteers' desk at-con and volunteer as usual.

Since the convention is getting close, our team have gathered a package of practical information about the convention and Helsinki to this Progress Report. We hope this will help you plan your travels and your stay in Helsinki, and help you make the most of the first Worldcon in Finland!

With best wishes,

**JUKKA HALME, KARO LEIKOMAA
AND COLETTE H. FOZARD
WORLDCON 75 CHAIR TEAM**

Tour de Helsinki



Get the most out of your stay and discover Helsinki on city bikes. Look for yellow bike stations or ask the next local you meet. Enjoy your stay.



HSL
HRT



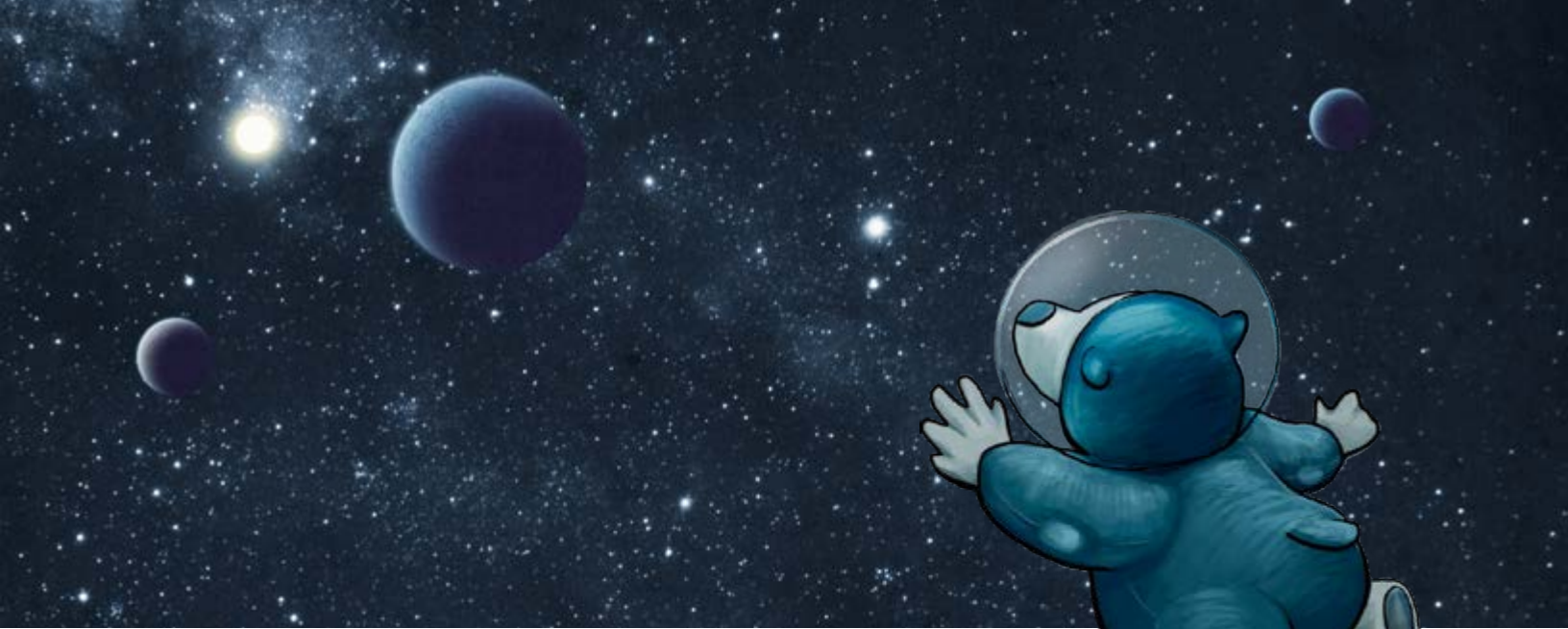
HKL
HST

Partner

alepa

hsl.fi/citybikes





HOW TO MAKE THE MOST OF YOUR FIRST WORLDCON

Is this your first Worldcon? Congratulations and welcome!

Worldcons are large and seem to contain a world and language of their own, so here are some pointers on how to make the most of your (first) Worldcon. If you are a seasoned con-veteran, you will know some of these things already even if you've never been to a Worldcon!

One of the big differences between Worldcons and many other types of conventions is that Worldcon sells memberships, not tickets. This means that everybody who attends the convention, whether an author, a fan, an artist, a staff member, a volunteer, is a member of the convention and, as such, a member of the Worldcon community and the World Science Fiction Society for the year. Worldcon is created by members, for the members!

BEFORE THE CONVENTION

Worldcon 75 will publish its programme about a month before the actual event, and checking to see what's being offered is, of course, a good way to prepare for the convention and to make a preliminary schedule.

Download the Grenadine Event Guide (available on iOS and Android) and check the worldcon.fi website for the code for this specific convention. Please note that there are bound to be changes before (and even during!) the convention, so it's a good idea to check the programme guide regularly. There's a good chance interesting items will overlap, so if you've found out a way of cloning your-

self, please let the con-organisers know – they'd need that ability, too!

In addition to the programme, Worldcon 75 will also have much more! It's really worth scheduling some time for seeing all the Exhibits and Displays and the Art Show as well, and of course thinking about visiting the Dealers' room, too! And while creating your own schedule, remember to schedule in times to eat, too!

One important thing to do before any convention is to read its Code of Conduct (COC). It tells you all the important things about how to behave in the consite – as well as useful and necessary info about where you can smoke, where you are allowed to drink alcohol, and so on. The purpose of the Code of Conduct is not to prevent anybody from having fun, but to make the convention fun for everybody! Worldcon 75 has its Code of Conduct on the website.

AT THE CON

Once the convention begins, the first thing to do is to register. You will pick up your badge there, which allows you entrance to all programme items, exhibits, and parties. Keep it visible. The lines for registration – and other things, such as signings – may be long, so please be patient.

Another thing you should do as soon as possible is to register for any KaffeeKlatsches you might like to attend. KaffeeKlatsches only accept a very limited number of participants, so they will fill up quickly. The sign-up for

KaffeeKlatsches happens at the info-desk and only one day of Klatsches will be available for the sign-up at the time (to prevent people from coming in on Wednesday and filling in all the slots for all the Klatsches during the five days).

If you have any questions about the convention, the info-desk is there to help you with them! They'll know or at least they'll know who will know!

Go see programme items, see the authors you came to see – but consider also going to see items by people you have never even heard of before! And perhaps even topics you never thought might be interesting! Many times a complete “unknown” may turn out to be super interesting and you may even discover a new favorite author this way!

While authors are at the convention to meet people and to be in the programme, they are there as regular members too, so please respect their privacy. Sometimes they also need a bit of peace and quiet. Also, if you do want to take a picture of them – or anybody!! – please ask for their permission.

MEET OTHER FANS

Worldcon is a great place to meet people who share your interests so do talk to people – even strangers. One way of finding like-minded people is to attend one of the scheduled fandom meet-ups! Another great place to meet people are the evening parties, which – unless very specifically mentioned – are open to all members of the convention!

While Worldcons create lasting memories, it may also be fun to have a more concrete memento or two. Consider taking part in a craft workshop in the Exhibits where you can craft something to take back with you or – naturally – buying something from the numerous vendors who will be selling books and more at the convention. Maybe you could buy a piece of art from the Art Show? That way every time you look at the dragon coaster or drawing (or whatever it maybe) you will always remember the Worldcon in Helsinki!

Sometimes, despite all the best planning, something bad may happen. You may feel ill or somebody breaks the Code of Conduct or something. In these cases you should contact one of our Turva personnel.

They can be easily recognized by their yellow/orange reflective vests with the text Järjestyksenvalvoja / Ordningssvakt / Security on the front and back. They're at the convention for its members' benefit and will be happy to help. Also, if they tell you to do or not do something, they really need to be obeyed for the safety of the convention.

If all of this makes you feel a bit overwhelmed, there is also a quiet space in the convention where you can go to wind down a bit, and there are lots of nice nooks and crannies at the convention centre, which might be ideal for a bit of quiet(ish) reading. The fan lounge also offers places to sit down and read. You know your own limits!

An important thing to remember – and easy to forget – is to eat, drink, and sleep enough! Don't be like that one con-goer who completely forgot to eat during a 10h convention because there was so much fun stuff to do and then nearly passed out! (Hint: They wrote this article!) There are restaurants in and around Messukeskus – and remember to drink water too!

Finally, one more piece of advice: Don't panic!

KAFFEEKLATSCHES

KaffeeKlatsches are small gatherings with an author (or other interesting person!) and approximately 10 people. These really allow you to meet with interesting people – and naturally fill up quite fast! Drinking coffee is optional.

GRENADINE

Grenadine is an electronic programme guide (available for iOS and Android – look for Grenadine Event Guide). You can use it to create your own schedules and it's also used to post any changes in the programme.

MASQUERADE

Masquerade is an event to see all the fabulous costumes at the convention being presented on stage. The best will receive prizes in several different categories – the costumes are really worth seeing! There will also be a Masquerade mid-show performance!

HUGO AWARDS

The Hugo Awards are one of the most prestigious awards in the SF world, and they are given out at the Worldcon. Hugo Awards are voted by the World Science Fiction Society members annually, so anybody who's bought their membership early enough can vote for them. And anybody who's a member of a Worldcon is also allowed to nominate for Hugos the following year!

BUSINESS MEETING

Business Meeting is the place where the World Science Fiction Society members discuss any possible rule changes for the Hugos and the Worldcons. It is open to any member of the convention, so if you really want to see what is happening “behind the scenes”, this is the place to be!

MARIANNA “KISU” LEIKOMAA



REGISTRATION

PRE-REGISTRATION

If you are reading this, the chances are you have already gotten a membership from our webstore or at our fan table in another con. Either way, please [go to members.worldcon.fi](#) and check that your membership information is the way you want it to be. Check that your legal name is spelled the same as it is in your ID. If you wish your name to go to the members' list on our website, enter a public name, which doesn't have to be the same as your legal name. We also intend to get a "badge name" option up at [members.worldcon.fi](#). If you don't enter a badge name, the name on your badge will be the same as your legal name.

REGISTRATION AT THE CON

The Registration will be located near the Southern entrance of Messukeskus at the cloakroom.

There will be one line for pre-registered members and another for walk-ins.

People with accessibility issues will have their own registration spot at the access desk where there is space for wheelchairs and scooters and a chance to sit down. Access desk is also situated near the Southern entrance.

WHAT DO I NEED TO BRING WITH ME?

Everyone must pick up their own badge. We will send you a personalised registration barcode via email before the Con. Please **bring this barcode and some sort of ID with you at the registration desk**. A passport, driver's license, or other ID with your photograph will do.

REGISTRATION OPENING HOURS

- **Tuesday, August 8th** (only for pre-registered members, staff, vendors and press): 18–21.
- **Wednesday, August 9th to Saturday August 12th**: 9–20.
- **Sunday, August 13th**: 9–15.

HOW TO REGISTER FOR WORLDCON 75

Online registration can be found at members.worldcon.fi. Current prices are at www.worldcon.fi/memberships. There will also be memberships available at the door during the convention.

DAY PASSES

Day passes will be available on our website from late June onwards and also at Messukeskus during the con. When you pre-register for a day pass, you will get a barcode by email. Bring this barcode with you to the Registration printed on paper or on a mobile device.

Please note that day passes are not full memberships. See “Why is it called a membership and not a ticket?”.

	WED	THU	FRI	SAT	SUN
ADULT	25 €	45 €	50 €	50 €	25 €
YOUTH	15 €	25 €	30 €	30 €	15 €
CHILD	10 €	15 €	20 €	20 €	10 €

WELCOME TO THE INFO DESK – THE HUB OF INFORMATION AT THE CONVENTION!

Do you have a question about the convention itself, Helsinki, or something else? We have you covered from tourist information and latest programme changes to signing up for trips and tours, kaffeeklatches, and more!

If we don't have an answer ready for you before you ask for it, we'll find out one for you!

ACCESS INFORMATION

We will have an access helpdesk available to assist members with any access queries they have during the convention. The desk will be located in the main lobby of Messukeskus, near registration and the info desk.

Any members with access needs are welcome to stop by the access desk when you arrive and we will register you. This is also where scooter pickups will take place.

PRICES AT THE DOOR

The prices of memberships at the door will be the same as they are at the time of publication of this Progress Report. However, we recommend pre-registering in the internet or at our fantable at various cons.

Kids under 5 get in free.

	NEW	UPGRADE FROM SUPPORTING
ADULT	195 €	160 €
YOUTH (16–25)	110 €	65 €
CHILD (6–15)	75 €	–

WHY IS IT CALLED A MEMBERSHIP AND NOT A TICKET?

When you get a membership for a World Science Fiction Convention (known as a “Worldcon”), you are actually getting a membership for World Science Fiction Society (<http://www.wsfs.org>) for that year. Each Worldcon is run by a committee that is different for each Worldcon. Worldcons are funded by memberships and supported by its members that given year. The membership gives you the right to partake in all the features of that Worldcon. Please note that single day or weekend passes do not include the rights of a Supporting membership such as voting rights for the site of a subsequent Worldcon, nominating and voting in the Hugo Awards, or receiving the Hugo finalist packet.

Your Attending membership covers not only convention programming but also events like the Hugo Awards Ceremony and the Masquerade as well as entry to a special exhibits hall, viewing and bidding on genre art in the Art Show, receiving the publications the Worldcon produces (you only get them in paper form if you chose the paper publications option when you pre-registered), and enjoying the many other services a Worldcon provides. It also allows you to nominate and vote in the Hugo Awards and to receive the Hugo packet, which would cost more than the price of the membership if you got every piece of art separately.

SANNA LOPPERI

WHAT IS TURVA?

Turva is a Finnish word. It means protection, security, safety, the feeling of being safe. The Turva Division at Worldcon 75 is responsible for Operations (Ops), Security, Code of Conduct, Listeners, Con Office, Move In / Move Out (MIMO), Logistics, Offsite Storage, and the Cloakroom. The purpose of the Turva Division is to make sure the convention is organised, built, and conducted in a safe manner.

While the Turva Division is mostly similar to a Division usually called Ops, or maybe Logistics, there are a couple of differences. Finnish law is quite precise on various things regarding organisation of events, which is reflected on the duties of the Turva Division. One of the major differences is that Ops will not be in charge of any crowd management, although they may be assisting their Security colleagues.

Security at the convention is slightly different from what attendees at non-Finnish conventions might be used to. Security at public events (Worldcon 75 counts as a public event in Finland) is governed by a laws which outline the ways both Security and the organisers are expected to behave and act. The biggest difference is the Security staff itself, who are all trained and approved by the local authorities for each event or convention separately.

At Worldcon 75, their most important job is customer service, but they are also there to make sure the people and the venue are safe. They can be recognised from their yellow or orange high-visibility vests with the words "Järj-



estyksenvalvoja, Ordningsvakt, Security" printed on their back and front in black text.

Security and Ops will be sharing a centrally-located office and they will also be roving around the convention. Of course you can get in contact with them at any time via the Info Desk or any Worldcon 75 committee or staff member.

CODE OF CONDUCT

Worldcon 75 has a Finnish-style Code of Conduct (COC), which includes everything from venue rules to how to behave towards other people. The Code of Conduct also includes general legal regulations related to alcohol and smoking. At Finnish conventions these are usually combined into one long text, but we have divided them into two sections, separating the venue rules and legal regulations from the rules of conduct.

The aim of the Code of Conduct is to make sure everyone is and feels safe during the convention, and also in our virtual spaces. We have zero tolerance for any type of harassment, and the Worldcon 75 committee will act swiftly and appropriately in the case of any breaches of the Code of Conduct.

The Listeners team at Worldcon 75, who are there to take any reports relating to breaches of the Code of Conduct, will be very internation-



PHOTO: HELSINKI CITY MUSEUM PHOTO ARCHIVE

al, and can take reports in several languages, including English and Finnish. If you wish to make a report please contact any member of the convention committee or staff and they will act immediately to either wait with you, in a suitable place, until one arrives or bring you to a member of the team.

Please read the full Code of Conduct which can be found at <http://www.worldcon.fi/coc/>

ALCOHOL RULES ARE STRICT – DON'T BRING DRINKS FROM OUTSIDE TO MESSUKESKUS

There are a couple of things members should know about the Finnish law regarding alcohol and smoking. Persons under 18 years of age are not allowed to purchase, carry, or consume any alcoholic drinks. For strong spirits (over 22% alcohol by volume) persons under 20 years of age are not allowed to purchase from a liquor store, or carry around in a bottle, but may purchase and consume in a restaurant or bar.

Please note that the age limit is quite strict. Cashiers are instructed to ask for ID from anyone who looks like they might be under 30 years of age.

Restaurants and bars are only allowed to serve alcohol in a designated area (licensed area, “*anniskelualue*”), which usually means inside the establishment, and sometimes outside at the terrace, and taking alcohol outside of those areas is not allowed. Carrying and consuming alcoholic drinks not bought from the restaurant or bar is forbidden within the licensed areas.

As the whole of Messukeskus is part of the licensed area for the catering companies Fazer, carrying and consuming alcoholic drinks or other intoxicating substances is strictly

forbidden in the Convention Centre and in its close proximity unless purchased from licensed vendors on site. If needed, Security will confiscate alcohol and other intoxicating substances. All controlled substances (such as illegal drugs) will be handed over to the local police.

Mild alcoholic drinks (up to 4.7% by volume), such as beers and cider, can be bought from grocery stores and sometimes small kiosks, between 09:00 and 21:00. Stronger alcoholic drinks, including wine and stronger beers, can only be bought from the special Alko stores, which have slightly more limited opening hours. They are usually open until 20:00 during weekdays and until 18:00 on Saturdays. Alko stores are not open on Sundays. Restaurants and bars are generally allowed to serve alcohol until 30 minutes before their closing time.

SMOKING – ONLY OUTSIDE THE CON PREMISES

Worldcon 75 is a non-smoking (including vaping) event. In accordance with Finnish law, a person must be 18 or older to smoke, and smoking is not allowed indoors at any time. It is also forbidden to smoke close to the entrances of the venue or close to “No smoking” signs.

This is also to make sure our members who suffer from asthma or have sensitivity to smoke, including the vapours from vaping, can enjoy the event without problems to their health. There are designated smoking areas outside, for those who wish to smoke or vape. Please make sure any smoking waste (ash, butts, etc) ends up in the ashtrays of the designated smoking areas.



PHOTO: HELSINKI CITY MUSEUM PHOTO ARCHIVE

KARO LEIKOMAA

TECH HELP NEEDED?

THE HELP DESK HAS YOU COVERED!

Worldcon 75 wants to make sure that our guests can enjoy the convention without technical hitches! The Help Desk stands ready to help you with any technical issues you may have, either with your own gear or any equipment used during the event.

Bring us your mobile devices, and we can help you charge a battery, change a SIM card, install an app or software or get online.

We can also provide you with a small safe to store your camera or laptop during lunch or a panel – the Help Desk is staffed permanently and we will provide you with a receipt when you leave your gear with us. You can also leave your devices with us for a recharge.

And as far as getting online is concerned, this will not be difficult. Messukeskus has a free and open wifi network called “Messukeskus,” that requires no password or login screen.

MARCO “MAC” JOHANSSON

A NOTE ON PHONES AND ROAMING:

If you are using a SIM card from an operator from the European Union, roaming charges will (mostly) be a thing of the past from June 15th onward. More information is available from your operator or this FAQ: <https://ec.europa.eu/digital-single-market/en/frequently-asked-questions- roam-home>

If your operator is not from a EU country, you may want to consider buying a prepaid SIM card in Finland.

The main operators in Finland are Telia, Elisa (also sold as Saunalahti), and DNA. Prepaid SIM cards are available from R-kioski shops or any phone or operator shop.

You are never far from an R-kioski in Helsinki, there are dozens of them in busy streets, shopping centers, in metro stations and also at the airport.

SIM cards offering unlimited calls and texts in Finland + unlimited data cost about 5-8 euros for a week. Higher speeds can be had for about 20-25 euros. The pricier cards are usually valid for 1-6 months.

Do check that your phone is unlocked and can swap to a different SIM card.

Don't waste your time looking for pay phones! They are nearly extinct in Finland

GETTING PLUGGED IN:

Finland uses 230 V current and standard euro plugs (type C & F, compatible with type E). If you did not bring an adapter with you and your hotel can't lend you one, your best bet is probably to go find a Clas Ohlson hardware store. There is one in the shopping centre opposite the main railway station, another in the Kamppi shopping centre.



PHOTO: HELSINKI CITY MUSEUM PHOTO ARCHIVE

SPACE ESCAPE NOW IN HELSINKI!



THE SECRET CABIN



THE MAYAN TREASURE



OUT OF MARS



WORLDCON 75 OFFER FOR **OUT OF MARS ROOM
20% OFF from 7th to 13th August 2017**



RESERVATIONS
WWW.ROOMESCAPE.FI
OR CALL +358 50 325 4331

WORLDCON 75'S EXHIBITS HALLS

WHERE THE BOOKS LIVE

SOME COMMON BOOK-RELATED PROBLEMS:

I don't have enough books!

Visit our trade hall to find something good to read, as well as clothes, games, jewellery, and other shinies. A list of traders is coming to our website soon!

I have too many books!

Bring along spares to donate to our BookCrossing library or to sell in our SF flea market. Keep an eye on our website for instructions on how to sign up to turn your books into money – with which you can buy even more more books!

I have books in a language I can't read!

We're collecting books in all languages for Cittadini del Mondo (Citizens of the World), a small charity in Rome that provides refugees with shelter, medical care, legal assistance, language training, special aid for women and pregnant women, and help navigating the daunting paperwork process of applying for aid from government and international aid programs. They also run an Intercultural Library to help refugees feel connected, respected, and welcome. We're seeking donations of books, especially in the languages they need most: Chinese, Arabic, Bengali, Urdu, Ethiopian, Hindi, and French, as well as Spanish, Korean, and other African, central Asian, Middle Eastern and eastern European languages. If you have books to donate (maybe you're a writer and have copies of your work in translation?) then bring them to the donation box in the Fan Lounge.

I want to sell my books!

If you're an author and would like to sell your books, we're running a table in the trade hall where you can bring copies of your books for sale. For a fee of 0.50€ per book we'll manage your sales and free you to enjoy yourself at

the rest of the convention. If you'd prefer a space to talk to fans and self-promote, we have a few Creators Alley tables left, especially for the first couple of days of the convention. Prices start from just 5€/day if you're already a convention member. E-mail creators-alley@worldcon.fi for details.

I want to talk to people about books!

Visit our fan tables to find societies and conventions that might be just your thing, or drop in on themed fan meets in our Fan Lounge to find like-minded fans.

I have run out of space for books!

Have a clear out and bring along any unwanted clothes, fabric, or craft supplies to donate to our craft and costuming area.

My walls are too boring compared to the wonderful worlds in my books!

Our art show can help – artists from all over the world bring you visions of fantastic places and unusual beings. Most of the artworks will be available for purchase in auction or in our print shop, so your walls can be just as interesting as your books.

I am bored of books!

Come and sample our other delights! Try a new craft in one of our workshops. Find out about the history of Worldcon and admire past Hugo trophies. Relax with some knitting or colouring. Catch up on some cutting-edge science. Explore the films in our film festival. Find a great new podcast to listen to. Dance with molecules. Make a costume to show off. Learn about our Guests of Honour. Or, just relax in the cafe and take it all in!

CLARE BOOTHBY

VOLUNTEERS – WORLDCON 75 WANTS YOU!

Top to bottom, Worldcon 75 is built by volunteers, and we're always looking for more. Worldcon 75 volunteers can be roughly divided into two categories: staff, who help make sure the con happens and put most of their work in before the event, and at-con volunteers, who help things run at the con and who put their work in during the event (or immediately before and after, for those helping with move-in and move-out). There is a great need for both kinds of volunteers.

If you are interested in joining Worldcon 75 staff, there are still a number of positions waiting to be filled. You can find them on our website, at <http://www.worldcon.fi/recruitment/>. If you have questions about specific positions, contact the appropriate Division. If you have questions about the staff in general, or want to offer yourself for a position or job that isn't listed on the website, please e-mail volunteers@worldcon.fi.

There are numerous different jobs for at-con volunteers, ranging from helping with move-in/move-out to helping people with access needs to working the cloakroom. A

more comprehensive list of volunteer tasks will be on the Worldcon 75 website by July. There are jobs for everyone, including sit-down jobs that don't require physical exertion. You can simply show up at the Volunteer desk at the convention, but there are special benefits for volunteers who sign up early! To volunteer, e-mail volunteers@worldcon.fi.

MEMBERSHIP

All Worldcon 75 staff and volunteers, from the Chair and Division Heads to the volunteers manning the info desk, need a Worldcon 75 membership; it is not provided for them. There are, however, other benefits to volunteering!

VOLUNTEER T-SHIRTS

There is a special Worldcon 75 t-shirt that's only for volunteers who put in a certain number of hours at the convention. There is no other way to acquire this shirt: it cannot be bought, either with money or with groats. You need to work for 20 hours at the convention in order to get the t-shirt. However, if you volunteer before July 31, you only need to work 15 hours for the shirt.

Move-in/move-out hours count as double towards the shirt! Move-in is on Tuesday 8 August and the morning of Wednesday 9 August, move-out is on the evening of Sunday 13 August and all of Monday 14 August – e-mail volunteers@worldcon.fi to sign up!

VOLUNTEER RIBBONS

Volunteers get their own unique ribbon, and early volunteers get a special Early Volunteer ribbon if they sign up before July 31.

GROATS

Groats are a special kind of currency valid in some of the restaurants in the venue and with some of the dealers at Worldcon 75. Volunteers earn groats per hours worked; move-in/move-out hours count as double towards groats.

Join us now in making Worldcon 75 happen!

KAISA VITIKAINEN



PHOTO: HELSINKI CITY MUSEUM PHOTO ARCHIVE

★ SCIFI ★ FANTASIA ★ KAuhu ★ KIRJAT ★ LEFFAT ★ SARJAKUVAT ★

THE MOST CELEBRATED FINNISH SF/F-ZINE

During the last few years we've published short stories by or articles about: George R. R. Martin, Nalo Hopkinson, Johanna Sinisalo, Karen Lord, Zen Cho, Nnedi Okorafor, Sofia Samatar, Lauren Beukes, Andrzej Sapkowski, Maria Turtschaninoff, Aliette de Bodard, Hannu Rajaniemi, Karin Tidbeck, Emmi Itäranta, Gene Wolfe, Hal Duncan, Peter Watts and many others.



WWW.TAHTIVAEHTAJA.COM
WWW.TAHTIVAEHTAJABLOGI.COM



FINNISH WEIRD

Read all about it!

ARTICLES
INTERVIEWS
SHORT STORIES

Free EPUB and PDF downloads at

www.finnishweird.net

Please spread the word!



STEAM HELLSINKI

OLAVINKATU 1, KAMPPI
K-22, FRI-SAT K-24

OPEN MON-SAT 16-04



WE MADE YOU A RESTAURANT GUIDE! ENJOY!

To help you make the most of your stay in Helsinki, we've been working hard (read: eating hard and drinking hard) to put together a guide brimming with inside information on some of local fandom's favorite places to eat and drink in Helsinki.

All of the places in the guide are ones that we've been to and liked, in some cases for decades. The guide should have something for everyone, from fast food joints to Michelin-star fine dining.

It would be impossible to cover everything good Helsinki has to offer in a concise guide like this, so there is plenty of opportunity for you to make some discoveries of your own. The restaurant guide is included in your Member Package at registration, and also available online. Welcome to Helsinki, we hope you're hungry!

J. ROBERT TUPASELA



MERCHANDISE

THE SHOP IS NOW OPEN!

Looking for a t-shirt, a reflector or a tote bag from Worldcon 75? The Worldcon 75 shop is now open for pre-orders. You can pick up your items at the con or have them delivered at home.

Check out our selection here:

<https://holvi.com/shop/worldcon/>

HANDY WITH A SEWING MACHINE?

Get your Ursa fabric from Spoonflower!

Ready-made t-shirts and hoodies are not all we have for you. You can order dark or light Ursa fabric and create your own stuff. The lovely space polar bear pattern is designed by Minna Salminen and is available in a variety of materials.

Pyjamas? Dresses? Shirts? Curtains? The choice is yours – the possibilities are endless!

Order here:

<https://www.spoonflower.com/profiles/worldcon75>



PHOTO: CHARLOTTE LAHONEN



FINLAND'S FIRST AND ONLY CONVENTION FOR YA FANS



Books, authors,
fan stuff, new
friends and
good vibes!



HEL-YA!

HELSINKI YOUNG ADULT
LITERARY CONVENTION

5.8.2017 // Restaurant Lämpö, Suvilahti

Follow us:
Facebook.com/helyafest
Twitter.com/helyafest
Instagram.com/helyafest



AND MANY MORE!

Lukufilis

TAMMI

WSOY



GUMMERUS

KAIKEN
ENTERTAINMENT

www.enhorningen.net

Enhörningen

Trettio år av finlandssvensk fantastik!

www.enhorningen.net

- ⇒ Nyheter
- ⇒ Recensioner
- ⇒ Noveller
- ⇒ Drapor
- ⇒ Diskussion

Följ också Enhörningen på Twitter: @enhorningezine

enhorningen@enhorningen.net

HELSINKI'S PUBLIC TRANSPORTATION SYSTEM: EFFICIENT AND CONVENIENT

If you've never been to Helsinki, you'll be pleased to find the city is served by a well-integrated, modern public transportation system that makes getting where you need to go easy. Worldcon 75 has made arrangements with public transportation provider HSL so it will be cheap too!

FROM HELSINKI-VANTAA AIRPORT

Coming from Helsinki-Vantaa to Worldcon is easy. You've got two main options: train or taxi.

Helsinki's brand-new commuter trains run frequently from the Helsinki-Vantaa Airport. Take a **P** train or an **I** train – they both take about half an hour and cost 5.50€ for a ticket, which you can buy on the train platform. Our access team reports that the trains are easy-on, easy-off with step-free access available at the airport and at your destination station, Pasila. If you're not going straight to Worldcon from the airport, the stop after Pasila, Rautatieasema (Central Railway Station) is located in the heart of Helsinki with connections to tram, metro, and bus lines.

If for some reason you prefer not to use the train, you can also take the number 615 bus. It costs the same as the train and you buy tickets (cash only) when you board the bus. Get off at the Pyöräilystadion stop. There will be about a half kilometer walk to Messukeskus from there.

Alternately, you can take a taxi directly to Messukeskus. Expect this to cost about 40€ (tipping is not customary in Finland). Uber, Lyft, and other unlicensed taxi services currently cannot legally operate in Finland.

TRAVEL TICKETS

When you get to Worldcon and you've registered, we have something for you: a travel pass, that will give you unlimited free access to public transportation in all of Helsinki, Vantaa, Kauniainen, and Espoo. These tickets, generously donated by HSL, will be usable from Wednesday to Sunday and should cover all your travel needs. Hold on to this ticket – we won't be able to replace it if you lose it! If you need

to buy your own tickets, they are available from the blue (cash & cards) and pink (cash-only) machines in Pasila or other major railway stations.

TRAINS

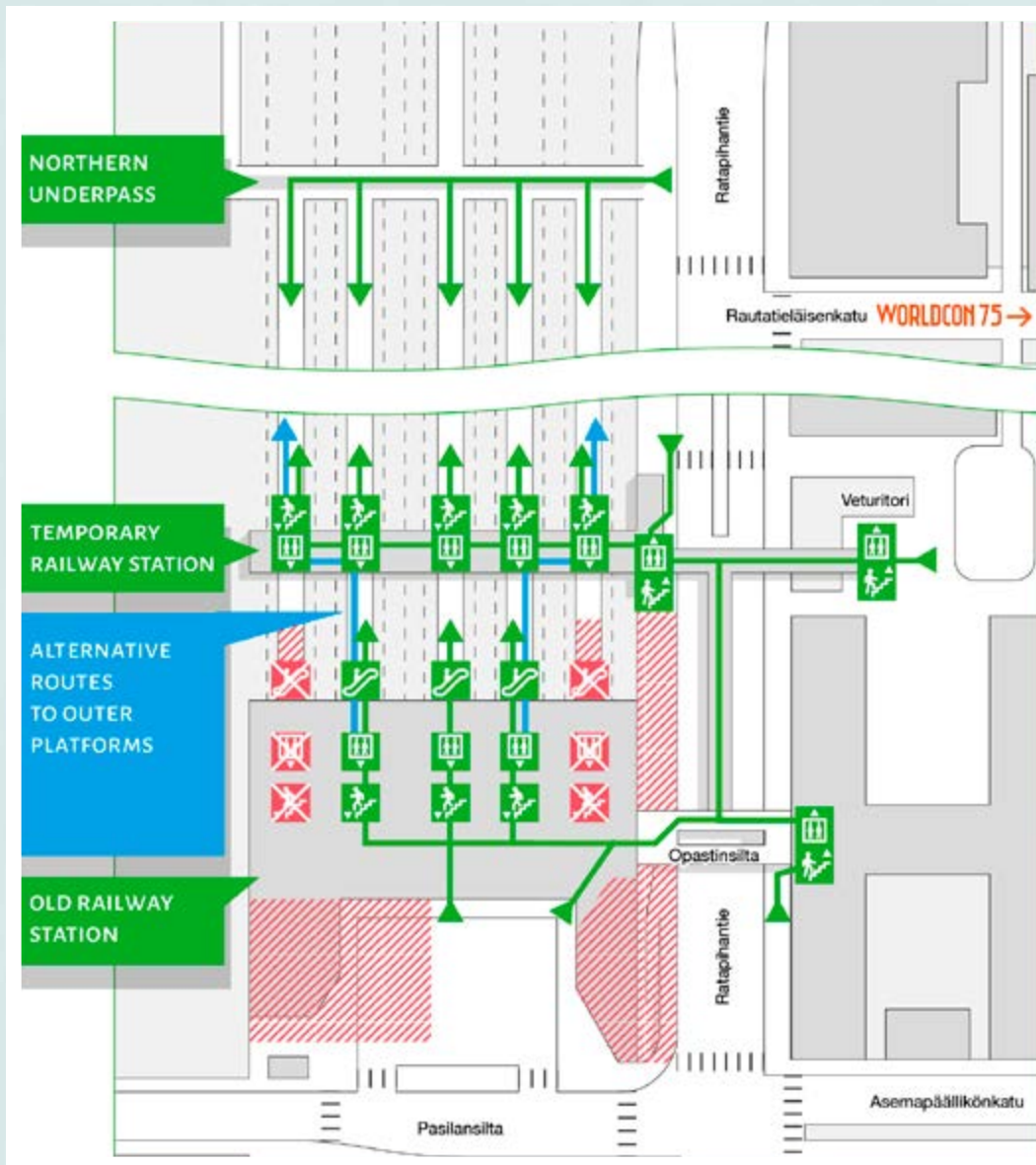
The commuter rail system mostly serves to connect central Helsinki to northern & western suburbs and the Vantaa airport. For Worldcon 75 attendees, the train system is your quickest route to downtown Helsinki: all trains that stop at Pasila and go south will stop next at Rautatieasema, the Helsinki Central Railway Station, in the middle of the city. The journey takes about five minutes and puts you in the middle of the major shopping area of the city, Kluuvi. Your travel pass is valid for the journey from Pasila to Rautatieasema and back and trains run until after 01.30 on Monday-Saturday and until after 00.30 on Sunday night.

TRAMS

Huom! Attention! Achtung! HSL has announced that the 2, 3, 7A and 7B tram routes are re-routed during the dates of W75, with buses taking the place of some parts of those routes. For full information see:

- The re-routings from 3 July to 13 August: <https://www.hsl.fi/en/traffic-bulletins/2017/tram-routes-2-3-7a-and-7b-diverted-until-13-august-2017-replacement-buses>
- The new routes which take effect Monday 14 August: <https://www.hsl.fi/en/new-tram-routes-2017/new-routes-and-maps>

The light-rail tram system is extensive and two tram lines connect to Pasila: the 7A/7B circular route and the 9. The 9 and 7 can both be boarded from Messukeskus; the 9 is your fastest route to downtown Helsinki. The 7A and 7B make up a circular route (7A goes clockwise, 7B counter-clockwise); if you get lost, any 7 tram will get you back to Messukeskus *eventually* although it may be a long journey. The trams will also get you to downtown Helsinki in a scenic journey that



PASILA STATION

Pasila (Swedish: Böle) Railway Station is located very near Worldcon 75 and has connections to trams, buses, and commuter rail (but not the metro). The station is currently undergoing a total renovation as part of a major capital investment in the northern part of central Helsinki, so when you arrive you'll be in a temporary station, which might be a bit confusing.

The exits to the station all put you on a street called Ratapihantie ("Railway yard street"). The quickest route to Worldcon is from the northern exit: if you take this one you'll see a big metallic building, Haaga-Helia Business College, across from you. Cross the street and follow Rautatieläisenkatu. (Remember, Finnish street signs are on the corners of buildings in two languages, usually Finnish on the top part and Swedish on the bottom! Messukeskus is on the opposite side of Haaga-Helia from you.)

The middle exit puts you out on Ratapihantie next to

a Subway sandwich store. Turn left and go north up the street until you see Rautatieläisenkatu, then turn right and cross the street and Messukeskus will be on your left. This middle exit is also where to catch connecting trams & buses. If you want to absolutely minimize walking, cross the street here to the 7A tram stop and take the 7A tram one stop to get to Messukeskus.

If you've come out the southern exits, go north on Ratapihantie until you're at the Subway and then follow the directions for the middle exit.

There are ramps or bridges that cross Ratapihantie that lead to the upper level of Pasila – they're convenient if you know your way around, but they also make it easier to get lost! If you venture this way, look for a bridge on the right-side of a large blue-tiled building (the main library in Helsinki). Cross it, take the stairs or the lift down and you will be at Messukeskus.

takes 20 to 25 minutes. The number 9 tram runs until 02.00 seven days a week, but the 7A/7B stop at 23.30.

To stop a tram, remember to wave at them! They won't stop just because they see you as many tram stops are served by multiple routes. Unless you need to buy a ticket, board the tram from any door but the front most. If you've got a travel card or day ticket you can ignore the electronic device with "0 1 2 3" on it. When you want to get off the tram, ring the bell by pushing the red button. The Messukeskus stop is simply called "Messukeskus" or "Mässscenrum" in Swedish.

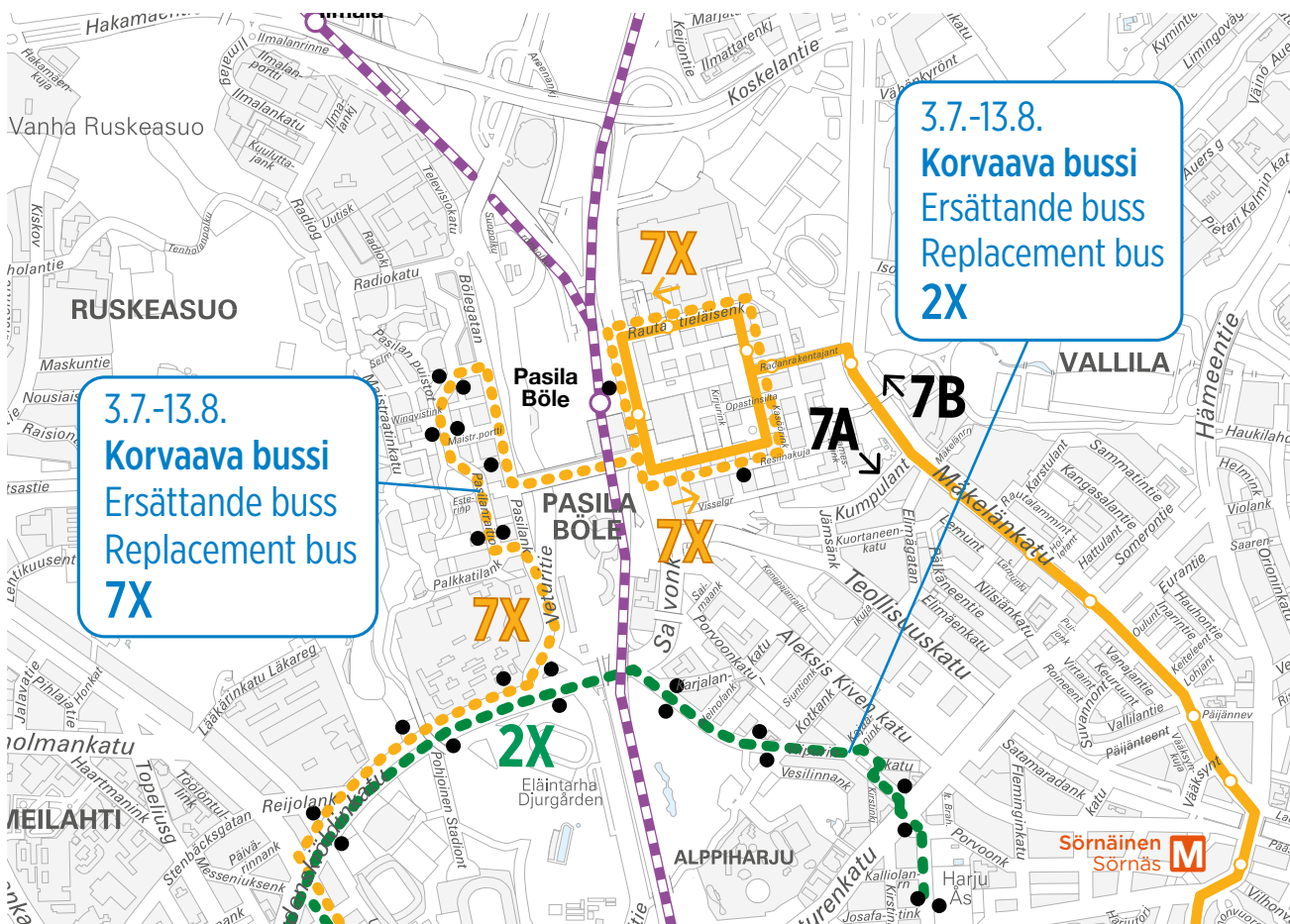
The 9 uses the newest trams and has the easiest access for visitors with special mobility needs; trams on the 9 come built-in with ramps. Make sure when disembarking to push the special button on the ramp to alert the driver! 7A and 7B use an older model trams and people in wheelchairs might want to bring a helper.

Most of the the older trams in Helsinki have been retro-fitted with a section in the middle with a low floor, but it can get crowded with baby carriages. At some stops there is a gap between the tram and the platform.

METRO

Helsinki currently has a single metro line connecting the central city with its eastern suburbs. Your Worldcon HSL travel card will work on the whole length of this line and you don't need to check in at a turnstile. To get back to Messukeskus from the metro, you can change to the rail or tram at Rautatieasema, to the 7A and 9 trams at Hakaniemi, or to the 7A at Sörnäinen. You can also get on the 9 at Kamppi or Ruoholahti, but the tram stops may be a little harder to find. Ask a local if you are having trouble finding the stops. The metro runs until after 23.00 every day of the week.

Ancient prophecies depicted in cave art on the walls of Helsinki University metro stop tell of a second line, which may someday appear to carry travelers to the magical land of Espoo. As of this writing, nobody in Helsinki has any hard information to confirm this tale. (In other words—the Espoo branch of the Helsinki metro was supposed to open in August 2016 (!), but the project is ridiculously overdue and over budget.)



EASIEST PUBLIC TRANSPORT ROUTES FROM THE CON HOTELS:

Arthur: Kaisaniemenkatu, take #9 toward Pasila.

Ava: Rautalammintie, take #7B toward Pasila.

Clarion: Huutokonttori, take #9 toward Pasila.

Forenom: Kampintori, take train from Central Railway Station or #9 toward Pasila.

Hellsten: Kansallismuseo, take #7A toward Pasila.

Hilton Helsinki Strand: Hakaniemi, take #9 toward Pasila.

Radisson Blu Aleksanteri: Aleksanteri Teatteri, take #6 or 6T toward Arabia and change at Hakaniemi for #9 toward Pasila.

Radisson Blu Plaza: Rautatieasema, take train from Central Railway Station or #9 toward Pasila.

Radisson Blu Royal: Kampintori, take train from Central Railway Station or #9 toward Pasila

Radisson Blu Seaside: Länsilinkki, take #9 toward Pasila.

Scandic Simonkenttä: Kampintori, take train from Central Railway Station or #9 toward Pasila.

Scandic Grand Marina: Kauppiaankatu, take #4 to Central Railway Station and then take train or #9 toward Pasila.

Sokos Albert: Aleksanteri Teatteri, take #6 or 6T toward Arabia and change at Hakaniemi for #9 toward Pasila.

Sokos Pasila: Maistraatintori, take 7A toward Pasila.

Sokos Hotel Presidentti: Kampintori, take train from Central Railway Station or #9 toward Pasila.

Sokos Torni: Simonkatu, take train from Central Railway Station or #9 toward Pasila.

Sokos Vaakuna: Lasipalatsi, take train from Central Railway Station or #7A toward Pasila.

Sokos Vantaa: Take train from Tikkurilan Asema to Pasilan Asema, about 15 minutes.

BUSES

Bus coverage in Helsinki is extensive and there are many night buses (routes labeled with “N”) providing bus transportation at times when trams and the metro are closed. Your Worldcon HSL travel card can be used on these buses within the Helsinki city limits. When boarding a bus, use the front door and touch the travel card against the electronic reader until it makes a “beep” sound.

Remember to wave at the approaching bus to flag it down, same as for trams! If you want to go from Messukeskus to the city center after the trams & trains are closed down, you can get the 615 bus from Mäkelänkatu, about a 500-meter walk from Messukeskus. Go out the front entrance, turn left and follow Rautatievälisenkatu east past the Holiday Inn. Keep following the road until you see a dual-carriageway road; this is Mäkelänkatu. Turn right for the bus stop in the inbound direction.

EXPLORING

If you want to take some time away from Worldcon to explore the city, the trams will serve you well. Also available is the “SpåraKOFF” – a vintage tram that’s been converted into a mobile pub! Check Con announcements for more information about these tours.

If you want to explore on your own, we recommend the #1 and #4 trams for the best views of Helsinki’s 19th-century architecture, museums, and diverse neighborhoods.

You’ve also got access with your Worldcon HSL travel pass to the HSL-run Suomenlinna ferry. Suomenlinna, a group of islands just off the coast, is the site of an 18th-century Swedish-built fort, Russian Imperial architecture, and picnic areas and beaches, and the ferry runs until 02.00 every day of the week. To get to the ferry, take the 1 or 7A/7B tram to Hallituskatu, then walk south through the market square. The ferry ride takes about 15 minutes.

Lastly, to really get off the beaten path, you can hire the yellow city-owned bicycles! Scroll to the next article in this progress report to find out all about the snazzy yellow city bikes that have taken Helsinki by storm.

MORE INFORMATION

As you can see, travelers in Helsinki have plenty of options for getting around. If you need more detail about the city’s many services, check out www.hsl.fi, which offers information in Finnish, Swedish and English, or send questions to info@worldcon.fi. Many thanks to HSL for their support, and welcome to our beautiful city!

**EDMUND SCHLUESSEL,
HELSINKI RESIDENT**



Raitiolinjat Spårvagnslinjerna Trams



- 1 Käuppatori - Käpylä (liikennö arkis päivinä)
Salutorget - Kottby (kör på vardagar under dagtid)
(Operates Monday to Friday during daytime)
- 1A Eira - Kauppatori - Käpylä (liikennö arkis ruske-ajoina)
Eira - Salutorget - Kottby (kör på vardagar under ruskeperiod)
(Operates Monday to Friday during peak hours)
- 2 Olympiatermiinaali - Kampi (M) - Toölä - Nordsenskiöldinkatu
Olympiaterminalen - Kampen (M) - Toö - Nordsenskiöldsgatan
- 3 Olympiatermiinaali - Kallio - Nordsenskiöldinkatu
Olympiaterminalen - Berghäll - Nordsenskiöldsgatan
- 4 Katajanokka - Munkkiniemi
Skatudden - Munknäs
- 5 Katajanokka (terminaali) - Rautatieasema (liikennö arkis kakkapäivinä)
Skatudden (terminalen) - Järnvägsstationen (kör enligt följande arkis- och avgångstider)
(Operates at the arrival and departure times)

- 6 Hietalahti - Rautatieasema - Arabia
Sandviken - Järnvägsstationen - Arabia
- 6T Länsitermiinaali - Rautatieasema - Arabia (liikennö arkis kakkapäivinä)
Västra terminalen - Järnvägsstationen - Arabia (kör enligt följande arkis- och avgångstider)
(Operates at the arrival and departure times)
- 7A Senaatintori - Toölä - Pasila (asema) - Senaatintori
Senatstorget - Toö - Böle (station) - Senatstorget
- 7B Senaatintori - Pasila (asema) - Toölä - Senaatintori
Senatstorget - Böle (station) - Toö - Senatstorget
- 8 Jätkäsari - Toölä - Arabia
Busholmen - Toö - Arabia
- 9 Länsitermiinaali - Rautatieasema - Pasila
Västra terminalen - Järnvägsstationen - Böle
- 10 Kirurgi - Pääsu Huopalahti
Kirurgen - Liljeholms

6/2016





NO NEED TO BRING YOUR BICYCLE TO HELSINKI

RENT A FRIENDLY YELLOW CITY BIKE!

What is the fastest way to move in an urban environment? This question has been researched by teams from MIT, Helsinki University and Top Gear. All groups have found that on short distances, biking (Finnish: pyöräily) beats both cars and public transport. The inner city of Helsinki is about four kilometers across, which, especially on cosmological terms, certainly qualifies as a short distance.

Helsinki Regional Transport Authority now provide a bicycle sharing system in Helsinki and Espoo. Their role and use is similar to how modern bike sharing systems work in other cities. In this article, we'll introduce you to hows and whys and will-it-fits of Helsinki bike sharing. For additional information, including a map of the bike station locations, visit the HRTA site at <https://www.hsl.fi/en/citybikes>.

All rides start at <https://www.hsl.fi/en/citybikes>, where you'll need to register as a user. You will need to provide credit card details to cover the charges.

Three different passes are available: 24 hour pass, one week pass and the season pass. Note that the 24 hour pass and the week pass are active from the moment of purchase, so only buy them after you've arrived in Helsinki. Your Worldcon 75 travel pass won't work—you need to sign up separately!

To ride the bike, go to a bike station, pick a bike and input a seven digit ID number and a four digit PIN on the bike keyboard. The bike then unlocks and you can go on your way. The first thirty minutes are free. The price then increases by 1 € every 30 minutes. The maximum rental time is five hours. Don't exceed that, because there'll be a 80 € fine.

Returning a bike is straightforward. Walk the bike up to the slot in a free bike station and push gently. The locks will secure the front wheel and you'll hear a beep. There's also a different tone in case the wheel is not deep enough and the locks can't close. Unfortunately the two tones can be tricky to distinguish in a noisy environment. Give an honest pull at the handlebars, if in doubt.

NEAREST STOP — A STONE'S THROW FROM THE MESSUKESKUS

There are two bike stops near the convention center and two more about 500 meters away. You can find the bike stop locations through the HRTA site or via <https://kaupunkifillarit.fi>. There also several unofficial but very useful mobile phone apps for Android and Apple phones.



THE BASICS: HOW TO TRAVEL ON THE YELLOW SUBMARINE BICYCLE

- Register as a user on the HRTA site
- Find the bike stop nearest to you
- Pick the bike that does not shirk from your gaze. They are the most reliable.
- Adjust saddle height
- Enter your ID number and PIN code
- Pull the bike gently away from the bike stop
- Hop on the bike and pedal. Turn the handlebars when necessary, but not too often.
- Fall in love with Helsinki in full summer bloom
- Hop off your bike near a bike stop
- Firmly push the bike into the slot and wait for the beep

The bikes have three gears. The first gear is useful for climbing the hills of Kallio. Even the third gear is relatively mild and the bikes have a reasonable top speed of about 20 km/h.

The saddle height is easy to adjust for your personal preferences. There's plenty of range, but 200 cm is probably the upper limit for the rider. The bikes include an integrated cable lock, which is operated via the keyboard. The bike also has a small basket on the handlebars. Most handbags and small backpacks fit fine.

MAKE YOUR OWN "TOUR DE HELSINKI"

Helsinki is a great city for biking. There are plenty of bike lanes and more are being built. Also, the inner city is by the sea and quite flat. There are only a few hills in the city bike service area. It is possible to avoid most of them with clever route planning.

As a visitor, you probably don't know the best routes in Helsinki. Well, neither does Google Maps. Its instructions are not wrong and you'll get where you want. But the instructions may at times recommend a gray noisy road, while a beautiful tree-lined bike path without traffic lights would be nearby. If you can, check the route against maps with better local data:

- The bike path map at <http://www.ulkoilukartta.fi>
- The local route planner <https://www.reittiopas.fi>
- The Strava heat map: <http://labs.strava.com/heatmap>

FINALLY, TWO RECOMMENDATIONS FOR A SHORT BIKE TRIP:

Get a bike from the Market Square and work your way south around the city. The views are wonderful. You can end your trip at one of the wonderful cafés in Eira, or at the sky bar at Hotel Clarion in Jätkäsaari.

Visit the Seurasaaari Open-Air Museum. First, make your way to Sibelius Monument and then continue north, enjoying the views of the sea on your left.

ANTTI RASINEN



AIRPORT TAXI[®]

YELLOW LINE



Airport Taxi - Worldcon75 Helsinki partner



*Book your hotel transfer in advance.
Book via our website www.airporttaxi.fi
or easily with mobile App **Yellowline**.*

*You'll find us in terminals 1 and 2.
Just jump in- we'll take you to hotel.*



Worldcon75 special prices for transfers

Front area 17,5€

Other area 27,5€

includes 1-2 persons

*To get special price
use code: Worldcon75!*

*Fill the code to:
Website/MobileApp*



www.airporttaxi.fi
sales@airporttaxi.fi
0600 555 555



ARRIVING EARLY IN HELSINKI?

WE HAVE OPTIONS FOR YOU!

NUCLEAR POWER TRIP

YOUR CHANCE TO SPEND A DAY VISITING THE OLKILUOTO POWER PLANT

Are you interested in nuclear power generation? Do you want to see how Finland plans to solve the problem of nuclear waste disposal?

This is your chance to visit the Olkiluoto power plant in Eurajoki, on the west coast of Finland.

Olkiluoto has two working reactors and a third one under construction. The third reactor is one of the first EPR reactors in the world and has faced severe delays and cost overruns, but is expected to come online next year. Olkiluoto will also become the site for a repository of spent nuclear fuel, which is being built into the bedrock near the power station. The Onkalo depository will be the first in the world of its kind.

The trip will take place by chartered bus and start at 8 am from the centre of Helsinki (the charter bus stop in front of the Kiasma art museum). The drive to Eurajoki will be about 3,5 hours and the bus will return to the same place in the evening. The bus is air-conditioned and equipped with wifi and a toilet.

You will be accompanied on the trip by Mr. Heikki Karkkolainen, a journalist who has spent over 40 years covering economic and political news, nuclear power development included, for the Finnish News Agency STT. (He is – of course – also a scifi fan.)

At the visitor's centre a light lunch will be served. The lunch is included in the price of the excursion, which is 35 euros per person (25 euros for minors under 18.)

The excursion will tour the power plant site on board the bus, but you will also visit the Onkalo exhibit on site, which demonstrates the future nuclear waste storage facility being constructed.

More information about the visit is available here: <http://www.tvö.fi/Come-and-visit-us>

Sign up at pr5questions@worldcon.fi

TOLKIEN PICNIC IN SUOMENLINNA

The Finnish Tolkien Society, Kontu, is organizing a get-together for the J.R.R. Tolkien fans from Finland and abroad on the day before Worldcon 75 begins.

The plan is to have a picnic on Tuesday at the beautiful island fortress of Suomenlinna, just off the coast of Helsinki. We will meet at the big Market Square (near the sea, from where the HSL public transport ferries leave) at 3 pm, and from there will take the ferry to Suomenlinna.

Feel free to join us later in case you miss the ferry, we'll update our location on the island to this Facebook page: https://www.facebook.com/events/186826588482490/?active_tab=about

IMPORTANT THINGS TO KNOW:

- The ferry costs 2,90 euros per trip. As the picnic will be held on the day before the con, one has to buy a ticket.
- Bring your own food and drinks. The Finnish Tolkien Society will take care of mugs, plates and cutlery as well as some small munchies – but when everybody brings something to share with others, the picnic will be turned into a proper hobbit feast! There's a small grocery store on the main island very close to the pier which should fill your basic needs, but do make your shopping beforehand if you want something more specific.
- More info on Suomenlinna can be found here (in various languages): <http://www.suomenlinna.fi/en/>

We hope to see plenty of Tolkien fans at the picnic, as it's a really nice opportunity to meet people from different countries and share our passion for the professor's work. Welcome!

This event is not organized by Worldcon 75, but by the Finnish Tolkien Society, Kontu.

TOUR THE SOLAR SYSTEM – BY BIKE!

The solar system tour is fully booked for now, but you can sign up as a reserve. Spots may open up!

The idea is to tour the miniature solar system in Helsinki by bicycle – while travelling at twenty times the speed of light.

The tour will take you around the 1:1 billion scale Solar System Model. A short description of the model is available here: <http://amazingfinland.blogspot.fi/2015/06/the-solar-system-at-human-size.html>

Aside from the planets, we will see kilometers of beautiful Helsinki shoreline, relax in quiet forests and enjoy a picnic by a waterfall. The total length will be about 40 kilometers (25 miles). The tour will take some four hours, including breaks. Please note that the tour requires you to be in a moderately good shape and have some prior biking experience.

If you are interested, please send an expression of interest via email to antti.rasinen@worldcon.fi. The price will be approximately 20 euros and will include a helmet and a lock as well. Food, water and clothing are up to the participants.

Please provide the following information in the email:

- Do you need a bike? If so:
- Men's bike or women's bike?
- Are you under 155 cm (5ft 1in) or over 190 cm (6ft 2in)

WEDNESDAY MORNING, BEFORE THE OPENING CEREMONY – ANOTHER CHANCE TO VISIT SUOMENLINNA

The historic sea fortress Suomenlinna (Finnish for “Finnish fort”), originally called Sveaborg (Swedish for “Swedish fort”), is one of the UNESCO World Heritage sites in Finland. The edifice inspired the young George R. R. Martin to try his hand at writing historical fiction.

We are arranging a private guided tour of the fortress on the morning of Wednesday August 9th. You will have plenty of time to return to Helsinki, register at the Con and witness the opening ceremony. The tour will cost about 11 euros, not including the ferry charges to and from the island.

Please email tripsandtours@worldcon.fi to reserve a place.

It is possible to arrange the tour in several languages, if enough people are interested. Include your language preferences in the email. At the time of writing, available languages are: Finnish, Swedish, English, German, French, Russian, Spanish, Italian, Japanese, Mandarin Chinese, Norwegian, Estonian, Polish and Czech.

If you would like to attend the tour on another day, please let us know. If enough people are interested we will arrange tours as needed.

See <http://www.suomenlinna.fi/en/fortress/> for more details about the fortress.

NINA TÖRNUDD

RELIGIOUS SERVICES AROUND THE WORLDCON WEEKEND



Finland is a predominantly Lutheran country, but other faiths are also represented. Here is a list of some religious services taking place over the Worldcon weekend.

SERVICES ON SATURDAY THE 12TH:

The **Helsinki Synagogue** (Malminkatu 26):
<http://www.jchelsinki.fi/en>

PLEASE NOTE: If you are interested in attending services at the synagogue, you must send a copy of your passport to the synagogue ahead of time for security purposes. Their address is srk@jchelsinki.fi.

If you are interested in attending services during the week of Worldcon, service times are as follows:

- On August 5, 2016, Kabbalat Shabbat services are at 19.30 Shabbat actually starts at 21.43.
- On August 12, 2016, Kabbalat Shabbat services are at 19.30, Shabbat actually starts at 21:26.

On both weekends, Shabbat morning services start at 9.00

If you come to Helsinki early, and are in town for the fast of Tisha B'Av, the fast starts at 21.54 on July 31st, and ends at 22.52 on August 1.

KOSHER FOOD:

- Zaafran and Company is a local kosher grocer and cafe. Their website can be found here:
<http://www.zaafranco.com/v1/>.
- Avi Hovav is a local kosher caterer, contact him here:
<http://www.avicatering.fi/for-tourists/>.

SERVICES ON SUNDAY THE 13TH:

The **Mikael Agricola church** (Tehtaankatu 23) will host an Anglican Eucharist mass at 10, followed by coffee in the crypt.

<http://www.helsinginkirkot.fi/en/churches/mikael-agricolan-church>
http://helsinginseurakunnat.fi/uutisetjatapahtumat/tapahtumat/anglicaneucharist-messuenglanniksi_37098/20170813.html.stx

The **St. Henrik Cathedral** (Pyhän Henrikin aukio 1A) will host an English-language Catholic mass on Sunday at 9.30–10.30.

<http://henrik.katolinen.fi/mass-times.html>

OTHER:

There will also be services in Finnish in many churches, among them the Helsinki Cathedral (Senate Square) and the Old Church (Plague Park).

- Helsinki Cathedral (Unioninkatu 29):
<http://www.helsinginkirkot.fi/en/churches/cathedral>
- Old Church (Lönnotinkatu 6):
https://en.wikipedia.org/wiki/Helsinki_Old_Church

The Church in the Rock Church (*Tempeliaukion Kirkko*; Lutherinkatu 3) is one of the most popular tourist sites in Helsinki and charges an entrance fee of 3 euros per visitor. On Monday, Tuesday, Thursday and Friday there is a short prayer at noon in English.

<http://www.helsinginkirkot.fi/en/churches/rock-church-tempeliaukio>

**ARI BARONOFKY,
NINA TÖRNUDD**



IF YOU HAVE SOME TIME OFF AND IT'S A SUNNY DAY

SOME SUGGESTIONS:

Visit Suomenlinna – the sea fortress is one of a kind in the world and especially pleasant to stroll about on a sunny summer day. It's not just for history buffs either. Last summer also saw a huge influx of Pokémon Go players, as the islands have lots of PokéStops and many rare Pokemons. <http://www.suomenlinna.fi/en/>

Go on a boat ride around Helsinki. There are several different cruise boats starting from the Market Square. You can also have lunch or dinner on board.

Go swimming. The Gulf of Finland is not crystal clear – or especially warm, but perfectly safe to swim in. You will get bragging rights and can impress your friends at home with your polar bear skills, having taken a dip north of the 60th parallel! There are several public beaches in Helsinki, but

the Hietaranta (or Hietaniemi) beach is probably the most popular one. Here is a list:

<https://www.hel.fi/helsinki/en/culture/sports/outdoor/outdoor-swimming/>

If you prefer a heated pool, you can go do a few laps (or go water jogging) in the Swimming Stadium, which is situated just a few minutes tram ride from the Messukeskus. There is an Olympic-size pool, diving boards, and a children's pool. This is popular with sunbathers as well.

<http://www.visithelsinki.fi/en/see-and-experience/activities-in-helsinki/swimming-stadium>

You can also go swimming at the new Allas pool complex, which is situated just next to the Market Square and the Finnish equivalent of the White House. Three pools, an

observation deck, a café, and a restaurant are available.

<http://www.allaseapool.fi/eng.html>

Visit Korkeasaari, the zoological park in Helsinki. It is situated on an island just a short boat ride from the Market Square. You can also get there by bus 16.

<http://www.korkeasaari.fi/helsinki-zoo/>

The Linnanmäki amusement park has free rides for little kids, a free 53 metre sightseeing tower, and a classic wooden roller coaster that has been making people scream in terror since 1951. You can buy a bracelet for a full day out or single tickets for the rides you want. <https://www.linnanmaki.fi/en>

ON A RAINY DAY:

The Ateneum Museum of Art has an exhibition on the architect and designer Alvar Aalto, which also looks at the artists who influenced him.

<http://www.ateneum.fi/nayttelyt/alvar-aalto/?lang=en>

Kiasma, the Helsinki Museum of Contemporary Art is showing the ARS 17 exhibition, which focuses on digital and video art.

<http://www.kiasma.fi/en/exhibitions-events/ars-17/>

The Museum of Natural History is a classic favourite to take the kids to see dioramas and exhibits about Finnish nature. <https://www.luomus.fi/en>

This year, the Helsinki City Museum has put up an exhibition highlighting sexuality, gender, and sex in Helsinki, going back to less enlightened times when homosexuality was illegal in Finland. Free entry. (This exhibition is up on the fourth floor of the museum, so you are not likely to wander into it by accident.)

<http://www.helsinginkaupunginmuseo.fi/en/exhibitions/helsexinki/>

The City Museum also has a Children's Town exhibition that allows kids to explore and play. Entry is free and the exhibits can be played with.

<http://www.helsinginkaupunginmuseo.fi/en/exhibitions/childrens-town/>

If you feel like going for a swim without getting wet – from rain – then the Mäkelänrinne swimming centre is the place to go, only a few minutes walk from Messukeskus. An Olympic size pool, saunas, and a spa pool are available. <https://www.urheiluhallit.fi/fi/paikat/makelanrinne.html>



TOURIST INFORMATION

This progress report aims to give our Worldcon members a compact package of useful information about visiting Helsinki and Finland.

But as we couldn't possibly cover everything, here is a list of a few handy resources that you can also use:

- Start by checking out the comprehensive Visit Helsinki website: <http://www.visithelsinki.fi/en/come/welcome-to-helsinki>
- The startup conference Slush takes place in November – but their handy Helsinki guide is also useful in August: <http://www.slush.org/helsinki/>
- Worldcon 75 shares a weekend with the ultimate hipster magnet – the Flow music festival. Here's their cool Helsinki guide: <http://www.flowfestival.com/en/visit-helsinki/>
- And for general information about travel in Finland, check out the Visit Finland site. <http://www.visitfinland.com>



PUB MEETINGS IN FINLAND

Will you be travelling in Finland before or after Worldcon? Would you like to meet some local scifi fans?

Here's a list of the regular meetups (nicknamed mafias) taking place around Worldcon.

HELSINKI

Every second Thursday at St. Urho's Pub, Museokatu 10.

- Thursday, August 3rd at 18.
- Thursday, August 17th at 18.

The Risingshadow.fi pub meeting

The second Saturday of every month at Ølhus Oslo, Haapaniemenkatu 3-5.

- Saturday, August 12th at 19.

ESPOO

The second and last Monday of every month

- Monday, July 31st at 18 at Pub Harakanpesä. Leipurinkuja 2, Leppävaara.
- Monday, August 14th at 18 Captain Corvus. Iso Omena shopping centre, Suomenlahdentie 1, Matinkylä.

JOENSUU

The second Tuesday of every month at Ravintola 60s Palaver, Kauppakatu 22.

- Tuesday, August 8th, at 18.

JYVÄSKYLÄ

The third Wednesday of every month at Ravintola Sohwi, Vaasankatu 21.

- Wednesday, August 16th at 18.

RASECON, THE RAASEPORI (RASEBORG) MAFIA

Different times, at Art Café Serendipity, Köpmansgatan 30.

- Dates and times will be announced in the public Facebook group. <https://www.facebook.com/groups/213460432019219/>

TAMPERE

The second Tuesday of every month at Ravintola Telakka, Tullikamarin aukio 3.

- Tuesday, August 8th at 18.

TURKU

The first Friday of every month at Panimoravintola Koulu, Eerikinkatu 18.

- Friday, August 4th 18.

VESA SISÄTTÖ

GOOD TO KNOW AND NICE TO KNOW

FROM WEIGHING YOUR APPLES TO FINDING A PHARMACY

Going abroad you always encounter myriad little things that are slightly different from how they are at home. This is a collection of useful stuff you might want to know.

This list does not pretend to cover everything, but it includes some things that surprised our staffers from abroad and things that our Finnish staffers think you might find useful.

HELSINKI WEATHER

Temperatures in August will most likely be 15–20 °C (59–68 °F), some sun, some rain.

Summer nights in Finland are not dark so bring a sleep mask if you are sensitive to the light when sleeping.

DATES AND LANGUAGES

Finland is a bilingual country with a Swedish-speaking minority and Helsinki (or Helsingfors) has street signs and other signage in both Finnish and Swedish. Generally Finnish is on the top of the sign and then below it is the same in Swedish. Dates are expressed in DD-MM-YYYY form. In other words, the Ninth of August is 09-08-2017. Time is expressed in the 24-hour form. So 6 p.m. is 18.

The ground floor does not exist. The lowest floor is the 1st floor.

SAFETY IN HELSINKI

Helsinki can be classified as “mostly harmless”, but do watch out for pickpockets and petty thieves, especially in areas frequented by tourists.

You are likely to see visibly drunk people around town, especially late on Friday and Saturday night. Ignoring them is usually the best way to get rid of the ones who suddenly want to talk to complete strangers.

Violent crime such as robberies are not common, but do be careful after dark around the railway station area and the Kaisaniemi Park next to it.

The number for emergency services here is 112.

HOTELS

If your hotel uses key cards (as most do), there is often a small card slot in the wall next to the room door. Put your card in it to make the lights work.

Most hotels in Finland and other Nordic countries don't offer soaps and shampoos in mini bottles. Instead, you will find a refillable soap/shower gel dispenser next to the sink and in the shower.

Bring your own scrub brush/washcloth/loofah as your hotel might not automatically have washcloths in the bathroom.

Tap water is safe to drink and better in quality than bottled water.

RESTAURANTS, TAXIS AND TIPS

Tipping is not customary in Finland. You can leave something extra if you want to, but restaurant staff do not depend on tips to make a living.

The same goes for taxis, you are not expected to pay more than the sum indicated on the meter.

Taxi fares are regulated, you can pick any taxi. They all have a yellow “taxi” sign on the roof.



WHICH LOO FOR YOU?

Toilets may be marked with international symbols or letters. M is for men (*miehet*), N is for women (*naiset*). Think Monks and Nuns. Sometimes the ladies' toilet will have a D; think of *Damen* (women) in German.

Free public toilets can be hard to find. Many cafés require you to be a paying customer or pay an euro or two for just the toilet. (If you are out and about in the city centre the Stockmann department store or the Akateeminen book store can help you with free toilets in your hour of need.)

SHOPPING

The most common supermarkets are called S-market, K-market, Citymarket, Prisma, Alepa, Lidl. They are mostly open from 7 in the morning until 21 in the evening. Sunday opening hours are shorter.

If you are buying fruit or vegetables that are not pre-packaged use the self-service scales to get a price tag for your stuff. There will be a number on the price sign next to the bananas or apples you are picking up. Lidl is the exception to this; there your stuff gets weighed by the cashier.

R-kioski sells many useful things: snacks, drinks, magazines, as well as gift cards, public transport tickets, stamps, and SIM cards.

The most common payment method is by credit/debit chip card, where you use a PIN number to confirm the

payment. You can bypass the PIN, but this requires showing ID.

Visa and Mastercard are the most commonly used cards. UnionPay is also gaining ground.

Small change: Finland does not use the 1 and 2 cent coins. If you pay in cash, prices will be rounded up or down to the nearest 5 cents.

BUYING ALCOHOL

Beer and cider is sold in shops only between 9 and 21.

Beverages with an alcohol content over 4,7 percent are only sold in Alko stores.

N.B. You have to be at least 18 to buy alcohol. This is a strict rule and cashiers are instructed to ask for ID if they think you look like you might be under 30 years of age.

LAUNDRY

If you need to do a load of laundry, bear in mind that self-service laundromats are not to be found on every street corner in Helsinki.

The 24pesula chain is probably your best choice if you don't want to use the laundry service at your hotel. A list of locations can be found here: <http://www.24pesula.fi/en/locations>

PARKING

Bringing your car? Pasila, the area where the Messukeskus is situated, has many parking garages you can use to store your four-wheeled friend. Most hotels will also have their own garage or are able to direct you to one in the vicinity.

The centre of Helsinki does not have a lot of free parking spaces, most spots are payable by the hour and/or reserved for residents. However, there are some free places around the Hietaniemi neighborhood, near the beach.

Another solution is to use the parking spaces near the airport. The ones nearest to the airport are more expensive, but for instance Go Parking (fifth floor of the parking garage of the Jumbo shopping centre) offers a week's parking for about 25 euros. There are several other similar services in the area, and all offer shuttle transport to and from the airport.

FINNISH LINGUISTIC PECULIARITIES

Finns may mess up your personal pronoun. Finnish has only one pronoun. "Hän" is the formal pronoun for both "she" and "he". In informal conversation, Finns will use "se" or "it"! This is a perfectly neutral usage and no one will

WHAT DO THINGS COST IN HELSINKI? HERE ARE SOME EXAMPLES:

- A prepaid SIM card: 7,90 for unlimited domestic calls, texts and 4G data (DNA).
- A stamp for a postcard home: 1,40 euros.
- A coffee and a cinnamon roll: 5–6 euros (café Picnic).
- A beer in a bar: 5–10 euros.
- A bottle of wine in Alko: starting from 7–10 euros.
- A sixpack of beer in a supermarket: 8–10 euros.
- A pack of cigarettes: about 6 euros.
- A ticket to the movies at the Tennispalatsi or Kinopalatsi multiplexes: 12,50–17,50.
- An island hopping boat ride to Suomenlinna, Lonna and Vallisaari: 8 euros for adults.
- A visit to the Temppeliaukio church (The Church in the Rock): 3 euros.
- A Moomin mug: 14–18 euros.

raise an eyebrow at a person referring to a friend, parent, or SO as “se”.

Finnish doesn't have to word “please” – it's hidden in the verb used – and Finns do not always remember to use it when speaking English.

YOUNG MEN IN MILITARY UNIFORM AROUND TOWN – IS THERE A COUP GOING ON?

Finland has compulsory national service and most young men (it's voluntary for women) do a minimum six months of service in the armed forces.

They are unarmed and harmless. If they are out and about they are most likely either going on leave or returning from it.

HEALTH CARE

Pharmacies are called “*Apteekki*” in Finnish. They fill prescriptions and sell non-prescription drugs and products. Painkillers and other over-the-counter medications are only available in pharmacies.

The pharmacy Yliopiston Apteekki, located at Mannerheimintie 96, is open 24 hours a day. *The Mannerheimintie 96 branch of the pharmacy chain Yliopiston Apteekki is open 24 hours a day.*

If you are a citizen of an EU or EEA country and have a European Health Insurance Card you can use the public Finnish health care system.

With travel insurance you can use the private health care providers. (Please don't travel without insurance!)

More information here: http://www.expats-finland.com/living_in_finland/public_healthcare.html

TICK ALERT

If you are going to be spending time in the countryside, especially in the southwestern archipelago or the Åland islands, it's a good idea to get vaccinated against tick-borne encephalitis, TBE.

Ticks like to hide in the grass and hitch rides on life forms that pass by, be they human, dog, elk or other. Some especially unlucky ticks can transmit the TBE virus.

More information is available here: <https://www.iamat.org/country/finland/risk/tick-borne-encephalitis>

**NINA TÖRNUDD, SAIJA ARO, COLETTE FOZARD,
TERRY NEILL, PAM BURR, OTTO MÄKELÄ,
TERO YKSPETÄJÄ, SONJA MIKKONEN, KATE SECOR,
KARO LEIKOMAA, AND MANY OTHERS**

PROGRESS REPORT RECAP

This Progress Report contains a lot of practical information we hope will be useful to our members coming to Helsinki.

However, the previous PRs also contain articles that could be of interest and use. Take a look!

All the Progress Reports can be downloaded here: <http://www.worldcon.fi/publications/>

PR#1:

- Facts about Finland and Helsinki

PR#2:

- Travel - how to get to Helsinki?
- Things to do if you have some time off – both in Helsinki and the neighbourhood.
- Hotels and their whereabouts.
- A guide to pronouncing Finnish.
- Why do street signs in Helsinki have two names on them?
- Some basic geographical terms in Finnish.

PR#3:

- A word on how hotels and hotel bookings work in Finland.
- An introduction to Finnish food, from Salmiakki to Karelian pasties.
- The “News from the Divisions” article also contains suggestions from our division heads about things that they think are worth seeing and doing. (p.s. Beer tram!)

PR#4:

- The ultimate sauna article
- A trip around the shores of Helsinki
- Experiencing Helsinki with small children in tow
- The geeky sights of Helsinki



worldcon.fi

info@worldcon.fi
volunteers@worldcon.fi

@worldcon75
facebook.com/worldcon75